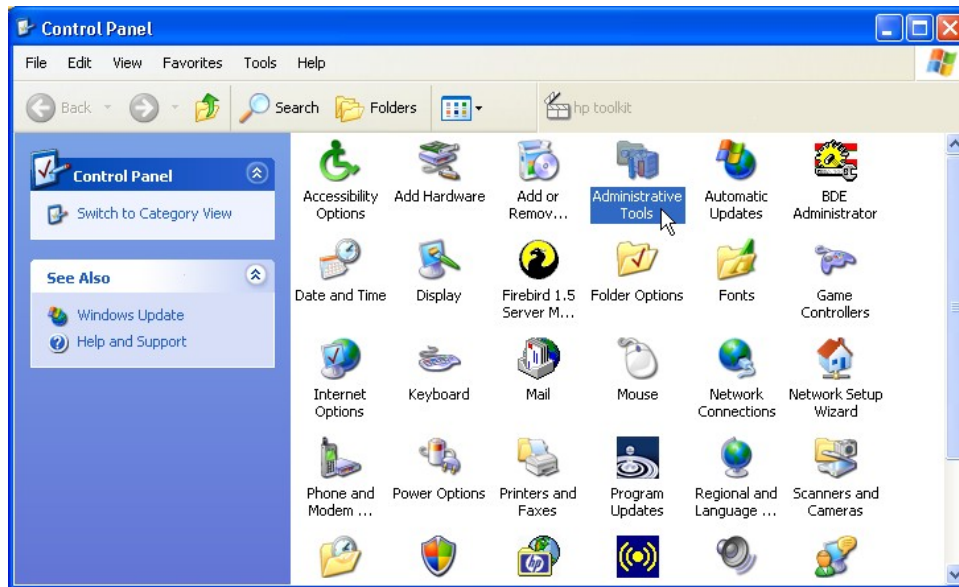
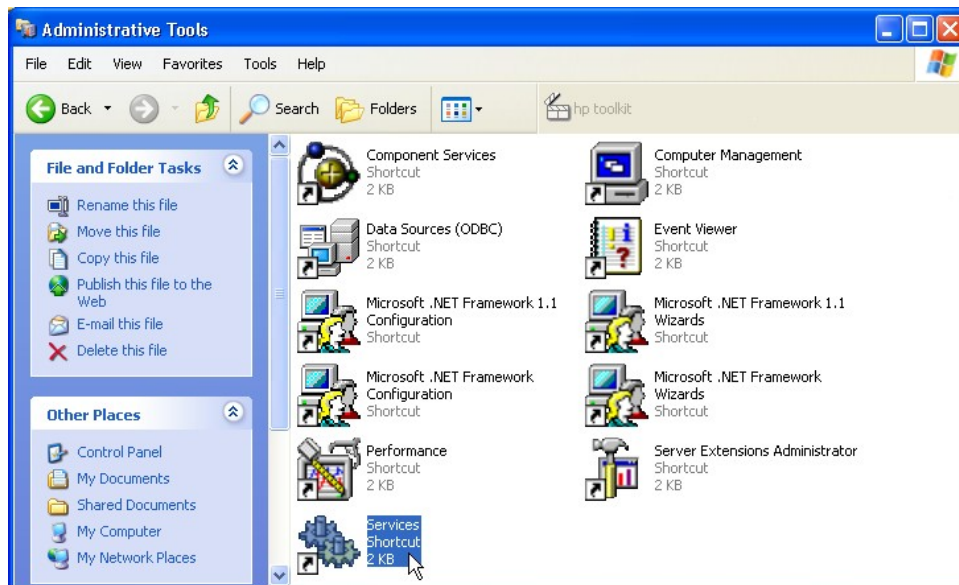


Starting the filePro License Service on Windows

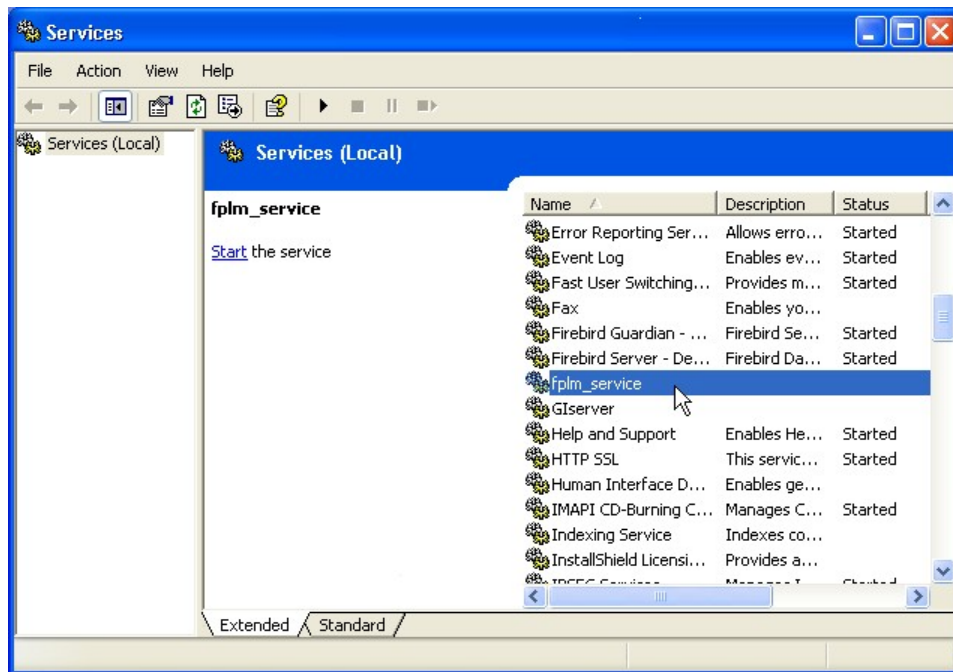
1. Click on “Start” , “Settings” and then “Control Panel” to display your Windows control panel options.
2. Click on the “Administrative Tools” icon in the control panel.



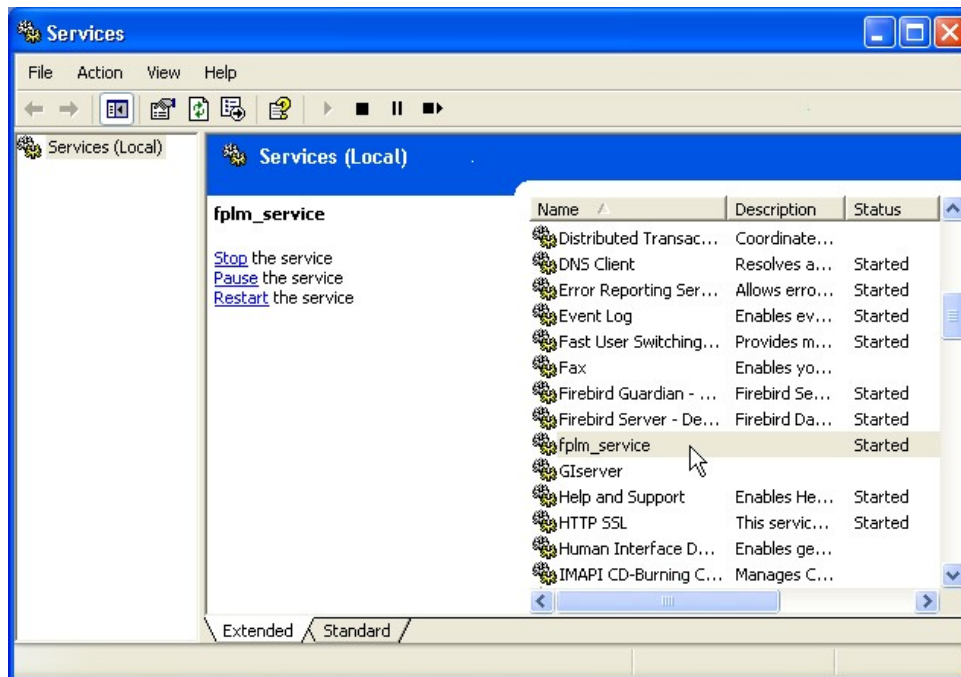
3. When the “Administrative Tools” panel is displayed, click on the “Services” shortcut to display the installed services.



4. When the Services panel is displayed, look for the “fplm_service”. You can start the service by clicking on “Start”.

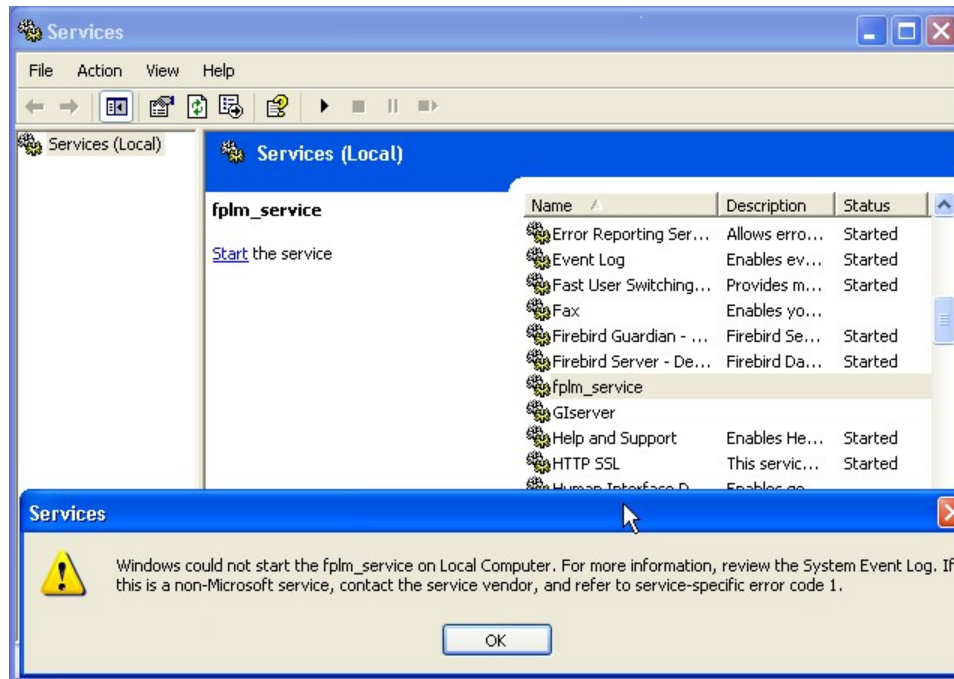


If the service properly starts, it will show “Started” under Status column as depicted below.



5. Close the Window's panels and test filePro to make sure things run.

If the service fails to start, an error window will be display as depicted in the following screen. This will usually be due to not having a good license, the license is not in the right place or the license may not have the right name. The license should be found as file %PFPROG%\fp\lib\licfp.dat where %PFPROG% is your filePro parent program directory e.g. c:\appl\fp\lib\licfp.dat if %PFPROG% is set to c:\appl.



Copyright 2006, fP Technologies, Inc. All Rights Reserved
These documents are covered under the terms and conditions of the fP
Technologies, Inc. Program License Agreement

rev. 03/30/2006

